

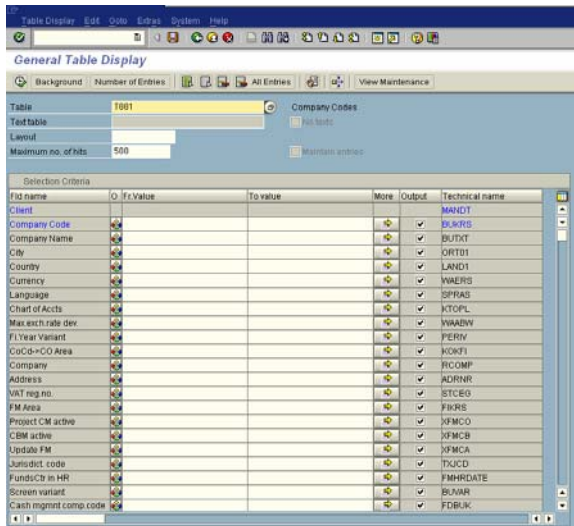
NOTE FEBRUARY 2007

Transaction SE16N – risk and control

The transaction code **SE16N** [report RK_SE16N] offers some options for table maintenance activities, if the corresponding authorizations are assigned as well. But together with this risk, SAP® provides an integrated control that can be used for review.

First of all we have to understand how the maintenance activities can be executed:

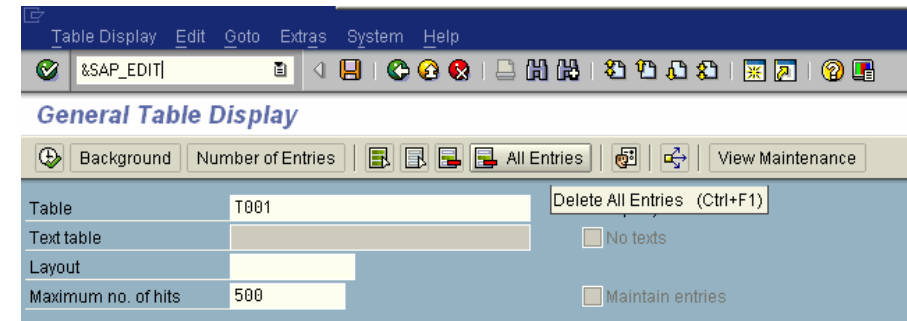
1. Call the transaction **SE16N**.
2. Enter the name of the table you want to maintain into the corresponding field.



Some tables already offer an integrated maintenance functionality. This is then represented by an activation of the checkmark in the checkbox: *Maintain entries*. For the tables that do not offer this option automatically you have to choose a different path.

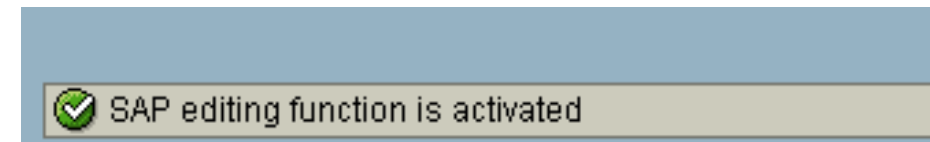
To activate the general maintenance functionality you have to enter the following:

3. &SAP_EDIT

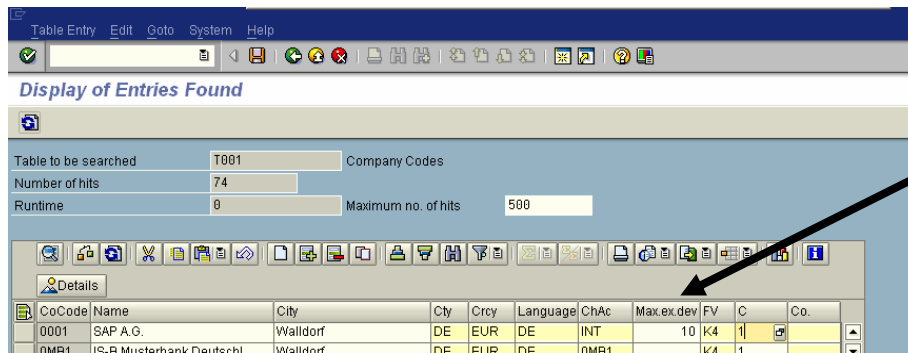


Confirm your entry with “Enter”.

4. You will then get the following message displayed:



5. Generate the table view with the help of the key **F8**.

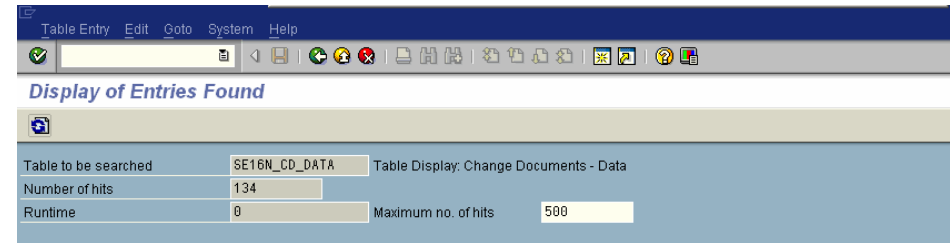


This way the table fields can be maintained.
 The above described table maintenance will only work for the tables that were already available when using the transaction **SE16**.
 The maintenance protection is part of the technical adjustments for the table.

Table maintenance in a production system always represents a critical risk, especially because not all changes are properly logged. Only changes to tables with tax relevant content are logged per default if the correspondent system adjustments [system parameter: rec/client] are correctly adapted.

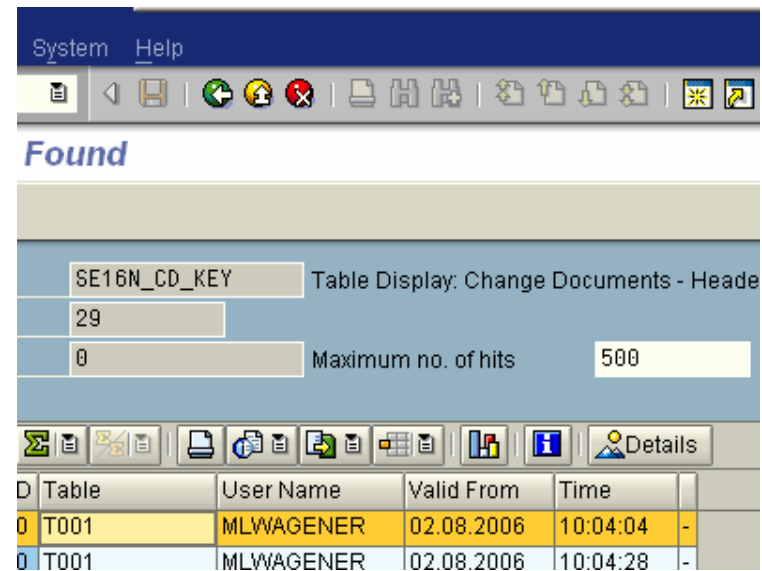
The advantage in using the transaction **SE16N** consists in the fact, that the accompanying changes are logged as well as the responsible users.

The data changes are stored in the table **SE16N_CD_DATA**

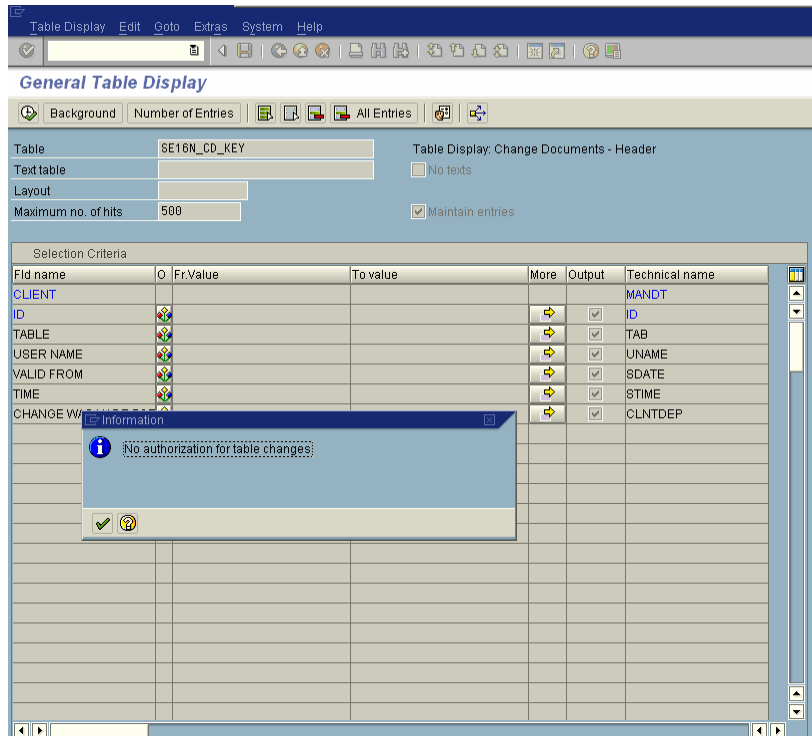


1	M	T001	3.000	1020001SAP A.G.	Walldorf	DE EUR	DINT	10K41
---	---	------	-------	-----------------	----------	--------	------	-------

The responsible user is listed in the table **SE16N_CD_KEY**, together with the modification date and time.



The change document tables are protected and cannot be maintained by this means.



The screenshot shows the SAP Table Display interface. The title bar reads "Table Display" with menu options "Edit", "Goto", "Extras", "System", and "Help". The main window title is "General Table Display". Below the title bar, there are buttons for "Background", "Number of Entries", "All Entries", and a refresh icon. The main area contains the following fields:

- Table: SE16N_CD_KEY
- Text table: No texts
- Layout: Maintain entries
- Maximum no. of hits: 500

The "Selection Criteria" table is visible, with columns: Fld name, Fr.Value, To value, More, Output, and Technical name. The table contains the following rows:

Fld name	Fr.Value	To value	More	Output	Technical name
CLIENT					MANDT
ID				<input checked="" type="checkbox"/>	ID
TABLE				<input checked="" type="checkbox"/>	TAB
USER NAME				<input checked="" type="checkbox"/>	UNAME
VALID FROM				<input checked="" type="checkbox"/>	SDATE
TIME				<input checked="" type="checkbox"/>	STIME
CHANGE W...				<input checked="" type="checkbox"/>	CLNTDEP

An information dialog box is overlaid on the table, displaying the message: "No authorization for table changes:". The dialog has a close button and a help icon.

Changes to the production system always require comprehensible documentation.
With the help of these tables, a system traceability is available.